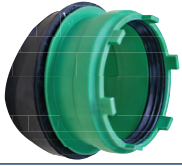


INSTALLATION INSTRUCTIONS

TWISTEE® Push-Fit Tapping Saddles



TT-PF



Designed to tap clay and concrete pipe lines.

PUSH-FIT TAPPING SADDLE

1

Make a clean, 90° core cut into the pipe wall using only a diamond core bit unit specified by Mission Rubber. Ensure there is no foreign matter or contaminants on the core surface, TwisTee® Push-Fit (B) or the TwisTee® rubber gasket (A).



2

Place the appropriate TwisTee® rubber gasket (A) firmly and securely into the cored hole with the two arrows pointing along the length of the sewer main. Ensure there are no gaps between the gasket and the pipe.



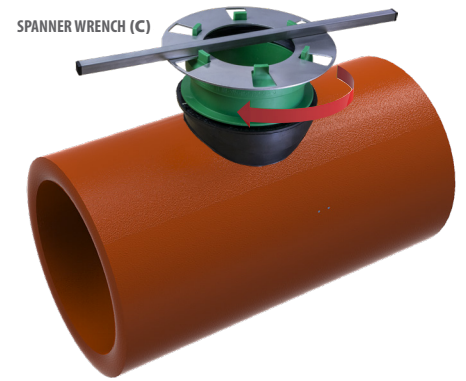
3

Place the TwisTee® Push-Fit (B) into the TwisTee® rubber gasket (A), ensuring the threads are properly aligned. Using both hands, slowly tighten clockwise until most of the threads are engaged.



4

Position the spanner wrench (C) over the teeth of the TwisTee® Push-Fit. Tighten clockwise in a continuous motion until the top thread of the TwisTee® Push-Fit (B) is flush with the TwisTee® rubber gasket (A).



5

To connect to the lateral pipe, lubricate and insert the pipe into the TwisTee® Push-Fit socket.



IMPORTANT: While threading the TwisTee® Push-Fit (B) with the spanner wrench, the tightening motion should not be interrupted. **DO NOT OVERTIGHTEN.**



Mission Rubber Company LLC | 1660 Leeson Lane | Corona, CA 92879
USA toll free 800.854.9991

missionrubber.com

REV.1/23



MISSION
RUBBER COMPANY LLC

connected, for good™