



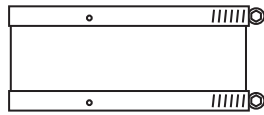
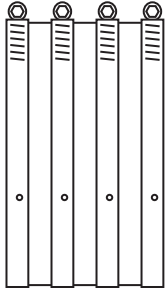
## Mission Rubber Company LLC

1660 Leeson Lane  
 Corona, CA 92879  
 (800) 854-9991 • Fax (800) 637-4601  
 missionrubber.com

**MISSION**  
 RUBBER COMPANY

**For Installations  
 Requiring a Shielded  
 Transition Coupling that  
 Joins Similar and  
 Dissimilar Pipe Sizes  
 and Pipe Materials**

**MEETS:**  
 ASTM C 1460  
 ASTM C 564  
 ASTM A240/A240M  
 CSA B602  
 UPC 11464



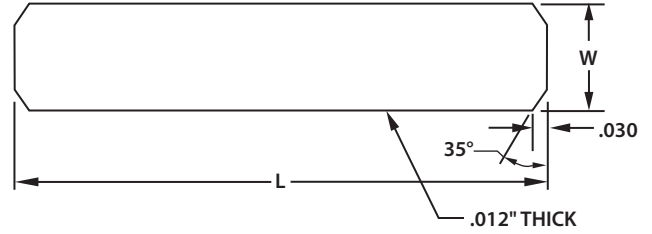
SIZES 3/4" THROUGH 4" - 2 BANDS  
 SIZES 5" THROUGH 12" - 4 BANDS

## Band-Seal® Coupling - Submittal K Series

Performance Couplings for Similar and Dissimilar Pipe Sizes and Materials

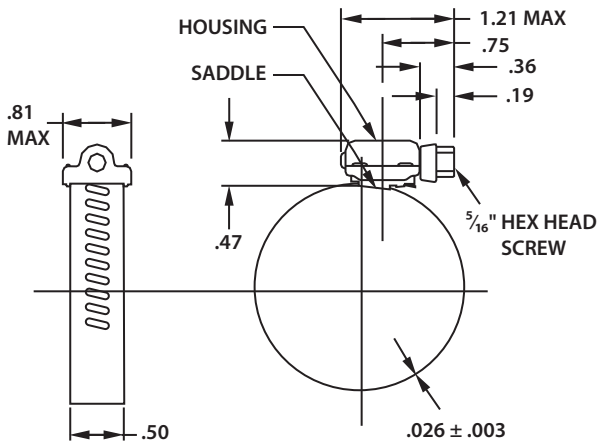
PROJECT \_\_\_\_\_  
 ENGINEER \_\_\_\_\_  
 CONTRACTOR \_\_\_\_\_

| MATERIALS     |  |
|---------------|--|
| Band          | Series 301 ASTM stainless steel  |
| Screw Housing | Series 301 ASTM stainless steel  |
| Screw Saddle  | Series 301 ASTM stainless steel  |
| Screw         | Series 305 ASTM stainless steel  |
| Shield        | Series 301 ASTM stainless steel  |
| Gasket        | This gasket is fabricated from a compound with high-quality elastomeric properties to meet physical testing. |

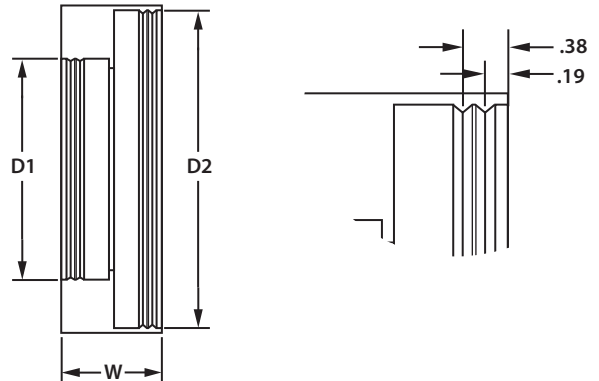


SHIELD DETAILS

### CLAMP DETAILS



### SEALING GASKET CROSS SECTION DETAILS



| MISSION REFERENCE<br>K SERIES | SHIELD DIMENSIONS |      | SEALING GASKET DIMENSIONS |      |      |
|-------------------------------|-------------------|------|---------------------------|------|------|
|                               | L                 | W    | D1                        | D2   | W    |
| K 075                         | 5.00              | 2.12 | 0.88                      | 0.88 | 2.12 |
| K 1125                        | 6.63              | 2.12 | 1.66                      | 2.13 | 2.12 |
| K 150                         | 6.63              | 2.12 | 1.66                      | 1.66 | 2.12 |
| K 200                         | 8.25              | 2.12 | 2.13                      | 2.13 | 2.12 |
| K 215                         | 8.25              | 2.12 | 1.66                      | 2.13 | 2.12 |
| K 250                         | 8.25              | 2.12 | 2.63                      | 2.63 | 2.12 |
| K 300                         | 11.44             | 2.12 | 3.13                      | 3.13 | 2.12 |
| K 400                         | 14.94             | 2.12 | 4.13                      | 4.13 | 2.12 |

| TEST                | GASKET PHYSICAL TESTS (ASTM C 564)   | ASTM C 564 |
|---------------------|--|------------|
| Tensile Strength    | 1500 PSI minimum   | D412       |
| Elongation          | 250% minimum   | D412       |
| Durometer (Shore A) | 70 ± 5 @ 76°F ± 5°F  | D2240      |
| Accelerated Aging   | 15% maximum tensile and 20% maximum elongation deterioration. 10 points maximum increase in hardness. All determinations after oven aging for 96 hours at 158°F.   | D573       |
| Compression Set     | 15% maximum after 22 hours at 158°F  | D395       |
| Oil Immersion       | 80% maximum volume change after immersion in ASTM oil #3 for 70 hours at 212°F   | D471       |
| Ozone Cracking      | No visible cracking at 2X magnification of the gasket after 100 hours exposure in 1.5 PPHM ozone concentration at 100°F. Testing and inspection to be on gasket which is loop-mounted to give approximately 20% elongation of outer surface. |            |
| Tear Resistance     | Die C 150 lbs. minimum per inch of thickness   | D624       |
| Water Absorption    | 20% maximum by weight after 7 days at 158°F  | D471       |

**Used to Join** - K Series couplings are used to join copper to copper for K 075, K 200, K 250, K 300 and K 400; and copper, plastic or steel to copper, plastic or steel for K 1125 and K 150; and copper to copper, plastic or steel for K 215.

**Mission's Band-Seal® Specialty Coupling** is a shielded transition coupling designed to connect similar and dissimilar pipe sizes and materials. Coupling consists of two (2) or four (4) 301 series stainless steel worm drive clamps, a 300 series stainless steel shield over a molded one-piece elastomeric sealing gasket. K Series couplings are available in sizes 3/4" to 4", which utilize two (2) clamps.

**Leak-Proof Seal** - Stainless steel clamps provide a positive seal when properly tightened to 60 in/lbs. of torque. Sealing "O" Rings are installed under each sealing clamp to prevent pipe slippage and create a more positive seal, ensuring a water-tight, leak-proof and root-proof seal.

**Corrosion Resistant** - 300 series stainless steel components provide highly effective corrosion resistance in a variety of environments.

**Joint Movement Restraint** - The Band-Seal® Specialty Coupling provides for superior load bearing control between the coupling and pipe surface. The coupling's rugged construction provides excellent sealing properties, and the stainless steel shield offers excellent resistance to shear forces and helps with alignment, while maintaining flexibility.

**Internal Pipe Stop** - For proper pipe positioning and noise/vibration reduction.  
**Pre-Set Calibration** - All Band-Seal® Specialty Couplings are designed to be installed with a pre-set torque wrench calibrated to 60 in/lbs. maximum to accommodate the 305 series stainless steel 5/16" hex head screw.