

# INSTALLATION INSTRUCTIONS

## TWISTEE® Tapping Saddles



# TT

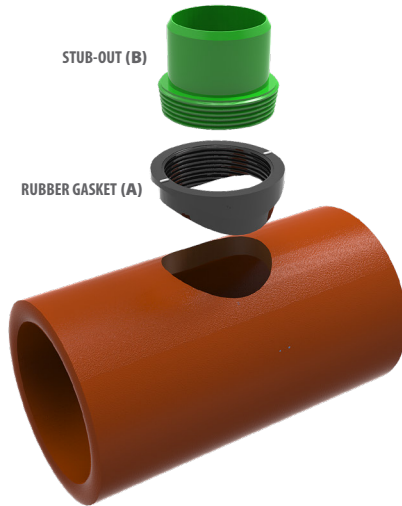
TAPPING SADDLE



*Designed to tap clay and concrete pipe lines.*

1

Make a clean, 90° core cut into the pipe wall using only a diamond core bit unit specified by Mission Rubber. Ensure there is no foreign matter or contaminants on the core surface, TwisTee® stub-out (B) or the TwisTee® rubber gasket (A).



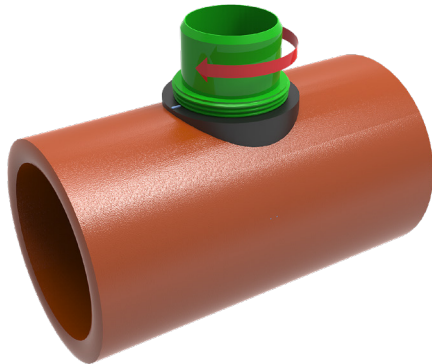
2

Place the appropriate TwisTee® rubber gasket (A) firmly and securely into the cored hole with the two arrows pointing along the length of the sewer main. Ensure there are no gaps between the gasket and the pipe.



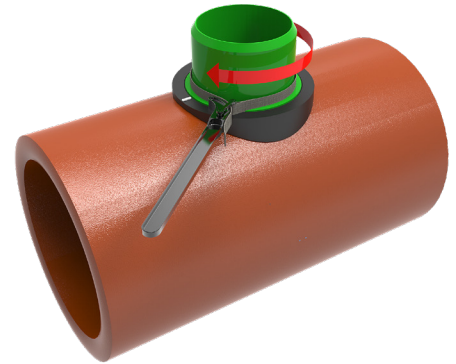
3

Place the TwisTee® stub-out (B) into the TwisTee® rubber gasket (A), ensuring the threads are properly aligned. Using both hands, slowly tighten clockwise until most of the threads are engaged.



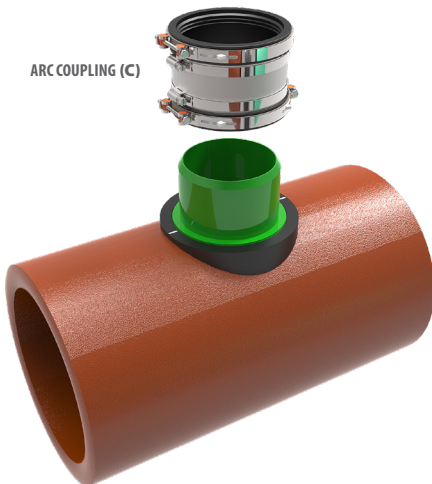
4

Place the strap wrench around the TwisTee® stub-out (B). Tighten clockwise in a continuous motion until the top thread of the TwisTee® stub-out (B) is flush with the TwisTee® rubber gasket (A).



5

To connect to the lateral pipe, choose the appropriate Mission Rubber Flex-Seal® ARC Adjustable Repair Coupling (C). Example: MR02 44 ARC or MR02 66 ARC, or contact your local waterworks dealer for assistance.



**IMPORTANT:** While threading the TwisTee® stub-out (B) with the strap wrench, the tightening motion should not be interrupted. **DO NOT OVERTIGHTEN**



Mission Rubber Company LLC | 1660 Leeson Ln. | Corona, CA 92879

USA toll free 800.854.9991

[missionrubber.com](http://missionrubber.com)

REV. 3/23



**MISSION**  
RUBBER COMPANY LLC

connected, for good™