

## Product Information

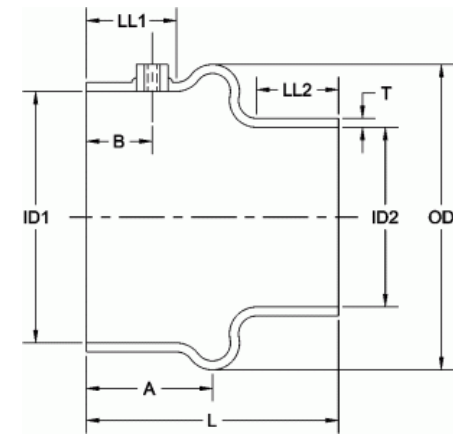
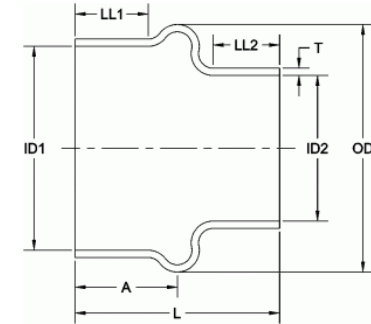
### Reducing Hump Hoses

Designed to meet unique transition requirements of air intake systems that require articulation or vibration isolation.

- Specifically formulated EPDM compound.
- Available in nitrile, chloroprene and silicone compounds.
- Can be custom formulated to meet specified end use application.
- Custom-cut lengths available.
- Vacuum collapse rating exceeds 54.4 inH<sub>2</sub>O.
- Recommended service temperatures: -40°F to +250°F.
- Complies with physical and mechanical property requirements per ASTM D2000 3BA715A14B13C12F17.
  - Hardness Durometer, ASTM D2240, Type A, 70±5 Shore A Hardness Points.
  - Tensile Strength, ASTM D412, Die C, 1500 psi., minimum.
  - Ultimate Elongation, ASTM D412, Die C, 250%, minimum.
  - Air Age Testing, ASTM D573, 70 hrs. at 100°C (212°F).
  - Hardness Durometer Change, +10, maximum.
  - Tensile Strength Change, -25%, maximum.
  - Ultimate Elongation Change, -25%, maximum.
  - Compression Set Testing, ASTM D395, Method B, 22 hrs. at 70°C (158°F), 25% maximum.
  - Ozone Resistance Testing, ASTM D1171, Method A, Exposure Rating, 72 hrs. at 40°C (104°F), 50 pphm, No Cracks Low Temperature Resistance Testing, ASTM D2137, Method C. Non Brittle after 3 Minutes at -40°C (104°F).

#### Legend

H: Hump Hose, WF: With Fitting



Mission Rubber Company | 1660 Leeson Lane | Corona, CA 92879 USA  
toll free 800.854.9991 fax 800.637.4601

[missionrubber.com](http://missionrubber.com)

10/22/2020



MR Part	Part	ID1	ID2	L	A	LL1	LL2	OD	B	T
3H236	2903337	3.00	2.36	6.00	3.00	2.35	2.25	4.25		0.25
3H25	2903359	3.00	2.50	4.50	2.25	1.60	1.51	4.25		0.25
3H275	2903338	3.00	2.75	3.50	1.75	1.09	1.06	4.38		0.20
35H25	2903345	3.50	2.50	6.00	3.13	2.00	2.00	5.00		0.25
35H275	2903347	3.50	2.75	4.00	2.25	1.59	1.06	4.88		0.20
35H3	2903369	3.50	3.00	5.00	2.50	1.79	1.75	5.00		0.25
4H275	2904073	4.00	2.75	4.00	1.75	1.57	1.06	5.50		0.20
4H3	2904092	4.00	3.00	5.25	2.63	1.94	1.88	5.38		0.25
4H35	2904098	4.00	3.50	5.25	2.63	1.94	1.88	5.38		0.25
45H4	2904118	4.50	4.00	6.00	3.00	2.13	2.03	6.00		0.25
5H4	2905107	5.00	4.00	6.00	3.00	2.13	1.81	6.25		0.25
55H4	2905149	5.50	4.00	6.00	3.00	2.13	1.88	7.00		0.25
55H5	2905156	5.50	5.00	6.00	3.00	2.13	1.88	7.00		0.25
6H5	2906121	6.00	5.00	6.00	3.00	2.13	1.88	7.50		0.25
6H55	2906139	6.00	5.50	6.00	3.00	2.13	1.88	7.50		0.25
7H5	2907129	7.00	5.00	7.00	3.50	2.50	2.28	8.50		0.25
7H5WF	2907131	7.00	5.00	7.00	3.50	2.50	2.25	8.50	1.83	0.25
7H55	2907137	7.00	5.50	7.00	3.50	2.50	2.28	8.50		0.25
7H6	2907145	7.00	6.00	6.00	2.75	2.25	1.53	8.50		0.25
7H6WF	2907147	7.00	6.00	6.00	3.25	2.25	1.52	8.30	1.56	0.25
8H55	2908393	8.00	5.50	7.05	3.50	2.50	2.25	9.60		0.25
8H6	2908390	8.00	6.00	6.00	3.00	2.00	1.75	9.60		0.25

	<b>Mission Rubber Company</b>   1660 Leeson Lane   Corona, CA 92879 USA <b>toll free</b> 800.854.9991 <b>fax</b> 800.637.4601		
	<a href="http://missionrubber.com">missionrubber.com</a>	10/22/2020	

MR Part	Part	ID1	ID2	L	A	LL1	LL2	OD	B	T
8H7	2908341	8.00	7.00	6.00	3.00	2.00	1.78	9.50		0.25
10H8	2910020	10.00	8.00	6.00	3.00	2.00	1.75	11.60		0.25



**Mission Rubber Company** | 1660 Leeson Lane | Corona, CA 92879 USA  
**toll free** 800.854.9991 **fax** 800.637.4601

**missionrubber.com**

10/22/2020

