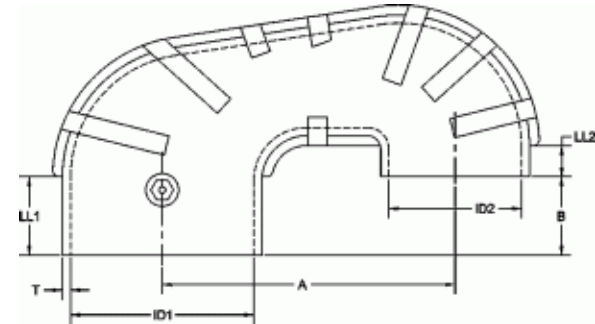
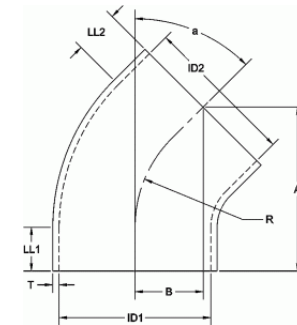


Product Information

Odd Angle EPDM Air Intake Elbows

Odd angle EPDM air intake elbow that complies with the increased expectations of modern diesel and gas powered engines. Available for OEM and aftermarket applications.

- Specifically formulated EPDM compound
- Odd Angle Elbow 180L70R50WF is molded with integrated ribs
- Can be custom formulated to meet specified end use application
- Custom-cut lengths available
- Vacuum collapse rating exceeds 54.4 inH²O
- Recommended service temperatures: -40°F to +250°F
- Complies with physical and mechanical property requirements per ASTM D2000 3BA715A14B13C12F17
 - Hardness Durometer, ASTM D2240, Type A, 70±5 Shore A Hardness Points
 - Tensile Strength, ASTM D412, Die C, 1500 psi., minimum
 - Ultimate Elongation, ASTM D412, Die C, 250%, minimum
 - Air Age Testing, ASTM D573, 70 hrs. at 100°C (212°F)
 - Hardness Durometer Change, +10, maximum
 - Tensile Strength Change, -25%, maximum
 - Ultimate Elongation Change, -25%, maximum
 - Compression Set Testing, ASTM D395, Method B, 22 hrs. at 70°C (158°F), 25% maximum
 - Ozone Resistance Testing, ASTM D1171, Method A, Exposure Rating, 72 hrs. at 40°C (104°F), 50 pphm, No Cracks Low Temperature Resistance Testing, ASTM D2137, Method C. Non Brittle after 3 Minutes at -40°C (104°F)."



Mission Rubber Company | 1660 Leeson Lane | Corona, CA 92879 USA
toll free 800.854.9991 fax 800.637.4601

missionrubber.com

06/18/2024



MR Part	Part	a	ID1	ID2	A	B	LL1	LL2	R	T
22L40	2902025	22°	4.00	4.00	4.25	1.00	1.50	1.50	4.00	0.25
22L55	2902026	22°	5.50	5.50	5.00	1.25	1.50	1.50	4.50	0.25
22L60	2902027	22°	6.00	6.00	5.50	1.50	1.75	1.75	4.50	0.25
38L60	2903380	38°	6.00	6.00	7.38	3.00	1.50	1.50	6.00	0.25
54L60	2906300	54°	6.00	6.00	7.44	3.50	1.75	1.75	5.75	0.25
68L55	2906141	68°	5.50	5.50	7.88	6.50	2.00	2.00	5.50	0.25
68L60	2906143	68°	6.00	6.00	9.13	6.50	1.63	1.63	7.25	0.25
68L70R60	2906382	68°	7.00	6.00	7.00	7.00	2.00	3.50	4.00	0.25
180L70R50W F	2907013	180°	7.00	5.00	11.20	3.00	3.00	1.20	4.00	0.31



Mission Rubber Company | 1660 Leeson Lane | Corona, CA 92879 USA
toll free 800.854.9991 fax 800.637.4601

missionrubber.com

06/18/2024

