

## Product Information

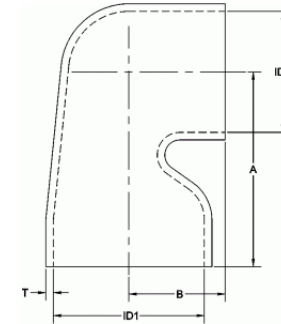
### Cobra Elbows

EPDM air intake cobra elbow that complies with the increased expectations of modern diesel and gas powered engines. Available for OEM and aftermarket applications.

- Specifically formulated EPDM compound.
- Available in nitrile, chloroprene and silicone compounds.
- Can be custom formulated to meet specified end use application.
- Custom-cut lengths available.
- Vacuum collapse rating exceeds 54.4 inH<sub>2</sub>O.
- Recommended service temperatures: -40°F to +250°F.
- Complies with physical and mechanical property requirements per ASTM D2000 3BA715A14B13C12F17.
  - Hardness Durometer, ASTM D2240, Type A, 70±5 Shore A Hardness Points.
  - Tensile Strength, ASTM D412, Die C, 1500 psi., minimum.
  - Ultimate Elongation, ASTM D412, Die C, 250%, minimum.
  - Air Age Testing, ASTM D573, 70 hrs. at 100°C (212°F).
  - Hardness Durometer Change, +10, maximum.
  - Tensile Strength Change, -25%, maximum.
  - Ultimate Elongation Change, -25%, maximum.
  - Compression Set Testing, ASTM D395, Method B, 22 hrs. at 70°C (158°F), 25% maximum.
  - Ozone Resistance Testing, ASTM D1171, Method A, Exposure Rating, 72 hrs. at 40°C (104°F), 50 pphm, No Cracks Low Temperature Resistance Testing, ASTM D2137, Method C. Non Brittle after 3 Minutes at -40°C (104°F).

#### Legend

CB: Cobra, R: Reducer, L: Elbow



MR Part	Part	ID1	ID2	A	B	T
90CB25R231	2902090	2.50	2.31	3.31	1.56	0.19



Mission Rubber Company | 1660 Leeson Lane | Corona, CA 92879 USA  
 toll free 800.854.9991 fax 800.637.4601

[missionrubber.com](http://missionrubber.com)

10/24/2020



MR Part	Part	ID1	ID2	A	B	T
90CB30	2903021	3.00	3.00	5.22	1.90	0.28
90CB40	2904035	4.00	4.00	6.44	2.69	0.25
90CB40L	2904040	4.00	4.00	6.44	3.19	0.25
90CB50R40	2905057	5.00	4.00	6.44	3.19	0.25



Mission Rubber Company | 1660 Leeson Lane | Corona, CA 92879 USA  
 toll free 800.854.9991 fax 800.637.4601

[missionrubber.com](http://missionrubber.com)

10/24/2020

